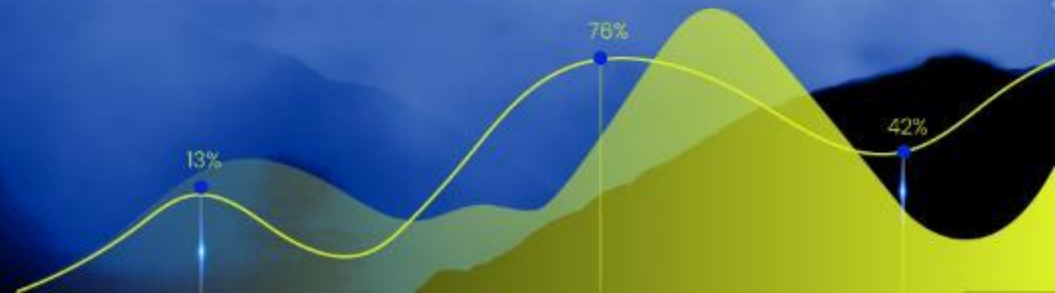


Radiflow

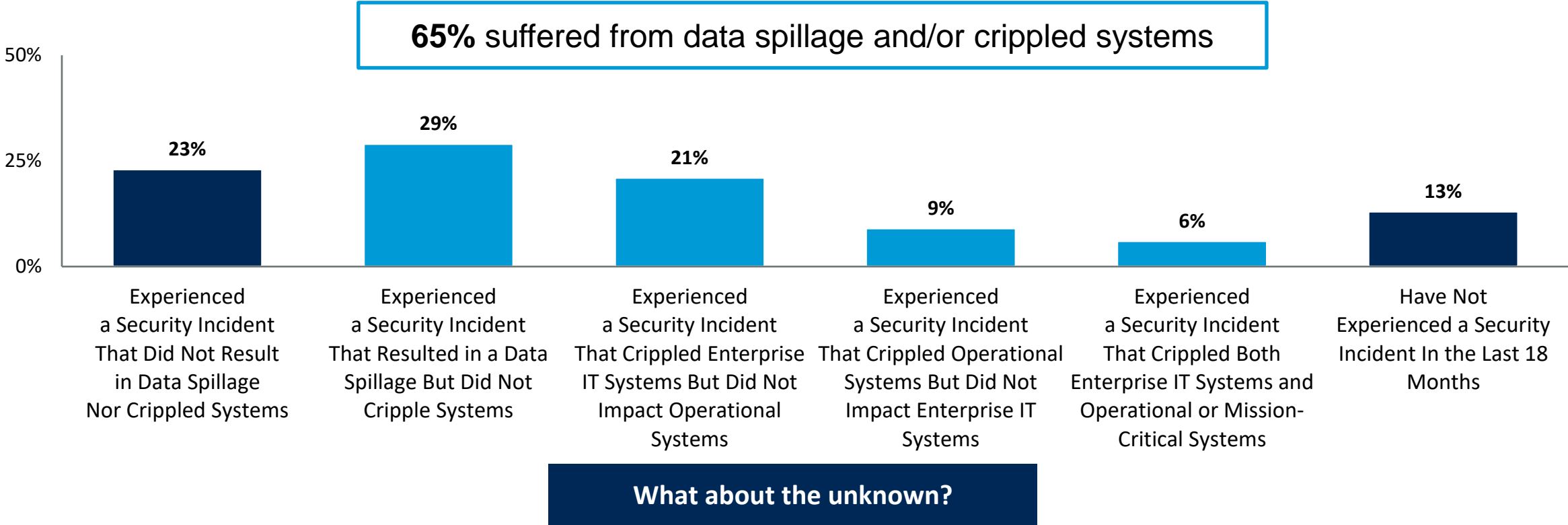
Taking Risks?
Not With Your
OT Security

Company Confidential



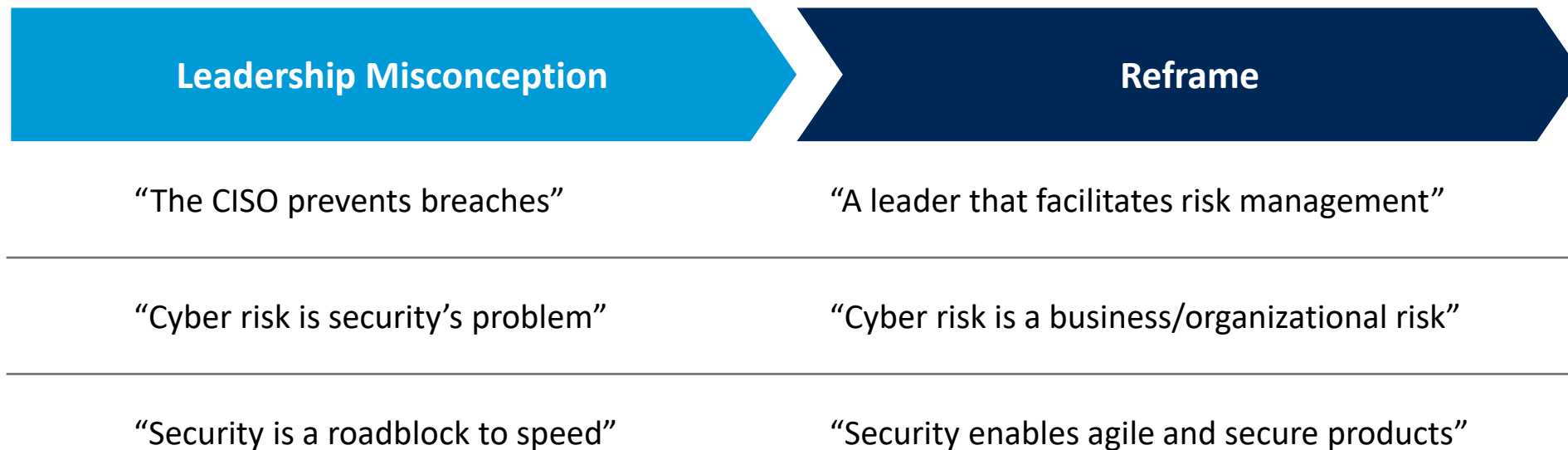
Eighty-Seven Percent of Organizations Know That They Suffered an Incident

Experience with most impactful cybersecurity incident in last 18 months



Source: Gartner 2021 Global Security and Risk Management Governance Survey

The Role of the Cybersecurity Leader Needs to Be Reframed



Source: Gartner 2021 Global Security and Risk Management Governance Survey

OT Security Team Challenges

Problem



Solution



Result



Growing and dynamic
OT threat landscape

Limited cyber security
budget

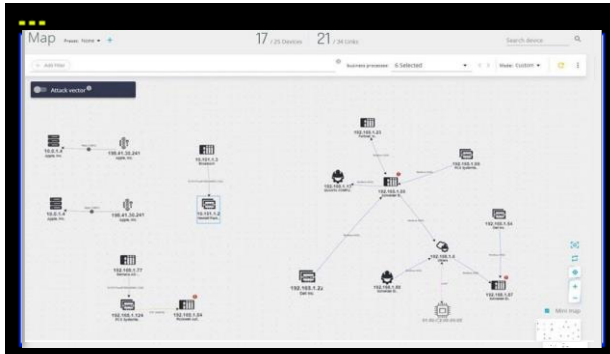
Monitor internal
network behavior and
threat intelligence feeds

Risk based reduction
planning

Continuous cyber risk
scoring

Mitigation planning and
Management

SEE



iSID: Network Presentation

MONITOR



CIARA: TI Updates
iCEN: Central Monitoring

KNOW



CIARA: OT Security Optimization



ACT



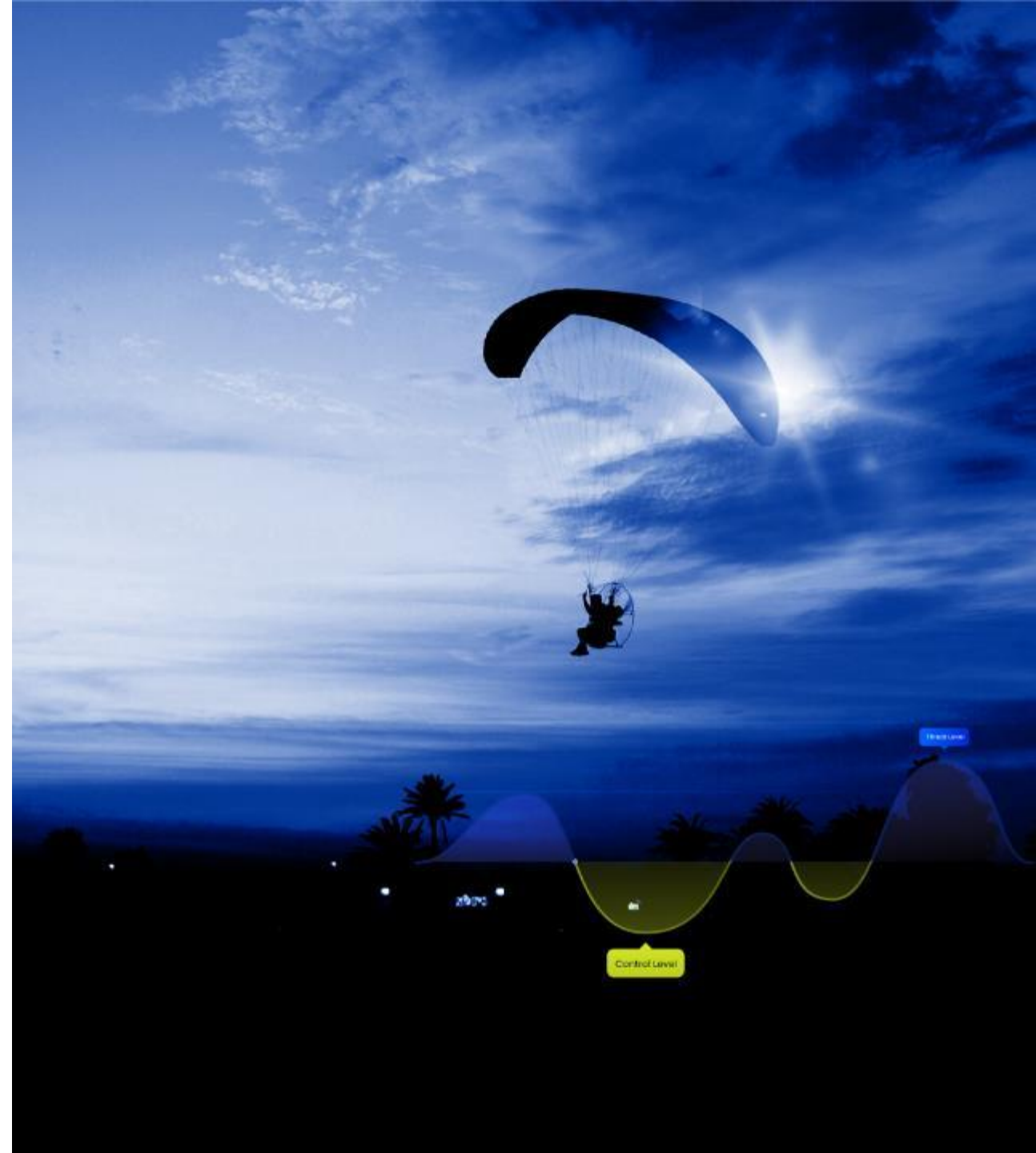
CIARA: Security Roadmap
iSEG: Secured Gateway

Full Lifecycle of Advanced OT Security Technology

- **Business-driven Automated Risk Scoring** for OT networks
- **Smart collector** for distributed industrial networks
- Compliance Enabler **IEC62443**, **NERC CIP** and **NIS-Directive**

SEE enables you to :

- Auto-learn Assets & Links
- Provide Asset inventory & vulnerabilities information
- Map Zones & Business Processes
- Detect PLC firmware & logic changes
- Non-intrusive OT DPI Analysis
- Monitor distributed sites using Patented Smart-Collectors



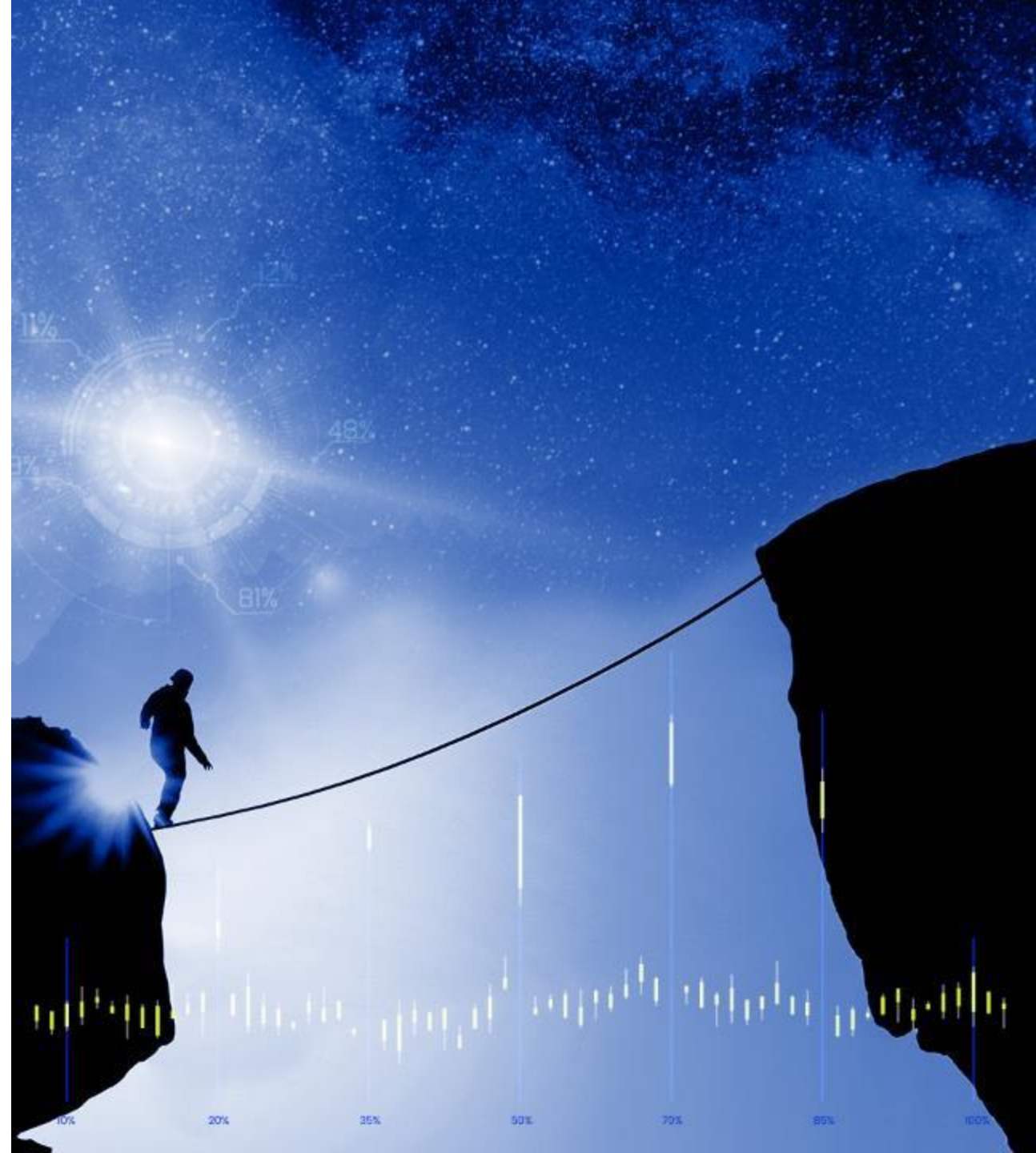
KNOW enables you to :

- Know what and who is threatening your network
- Know where your network stands in terms of risk and the potential impact
- Know your cyber risk posture compared to your tolerable risks
- Know your compliance gaps by mapping SLT (Target) vs SLA (Achieved)
- Cover relevant threats by utilizing Breach Attack Simulations (BAS)



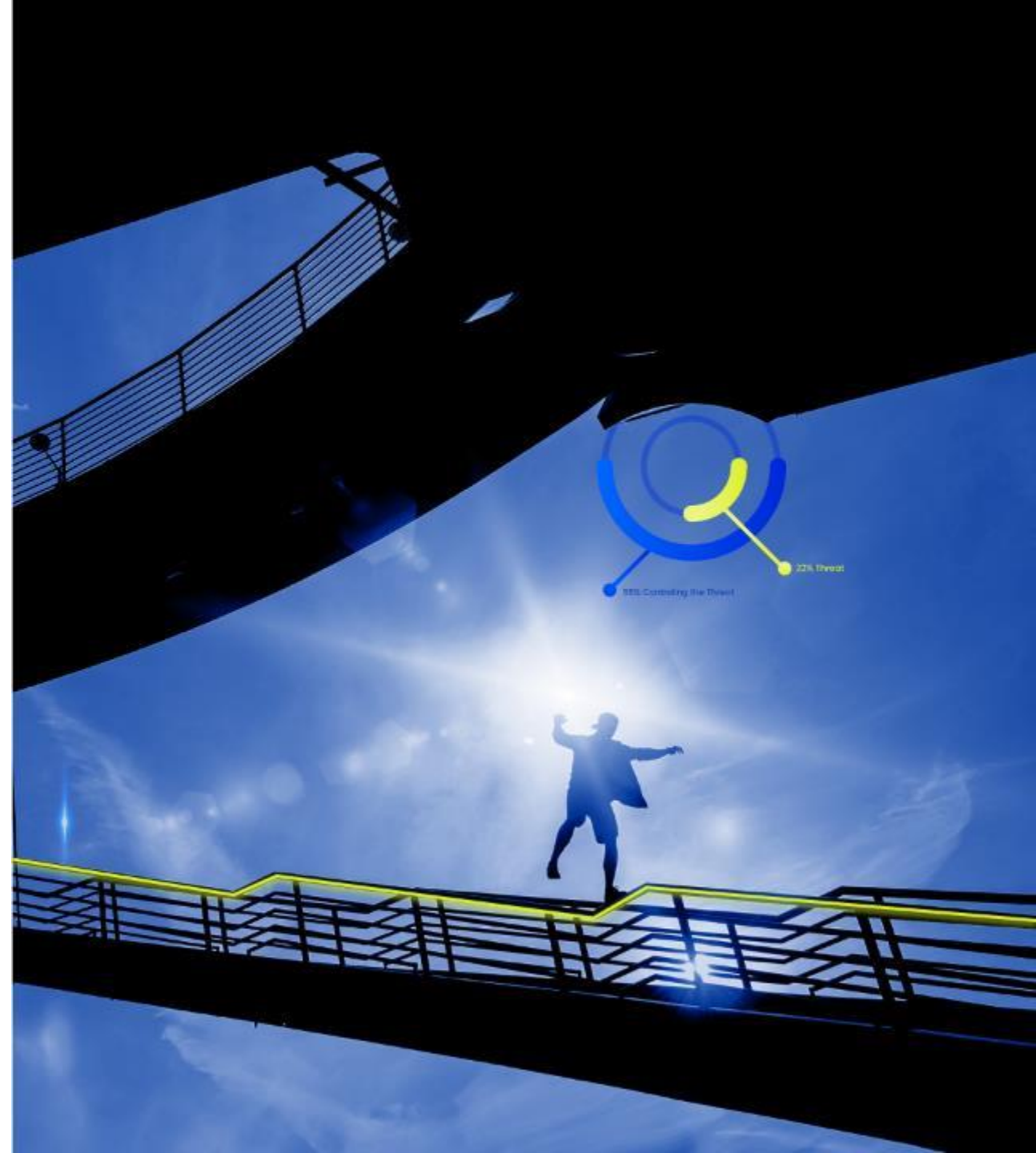
ACT enables you to:

- Optimize all security controls for risk and compliance
- Plan how to close SLA/SLT compliance gaps
- Integrate network's digital image with impact on business for personalized plan
- Enforce access policies in critical network segmentation junctions



MONITOR enables you to

- Prioritize SOC response based on risk and business impact
- Continuously monitor your ever changing threat landscape
- Compliance progress over time
- Report to the executives about risk posture changes over time



OT Security Life-Cycle Management Portfolio

Detection & Monitoring



iCEN: Central Monitoring



iSID: Industrial Threat Detection



iSAP: Smart Collector

iSID Active Scanning Module with also SNMP OT Inventory Service

iSID and SIGA integration For Layer 0/1

Analytics



CIARA: Risk Analytics



iSOC: MSSP Framework

Policy Enforcement



iSIM: Service Manager



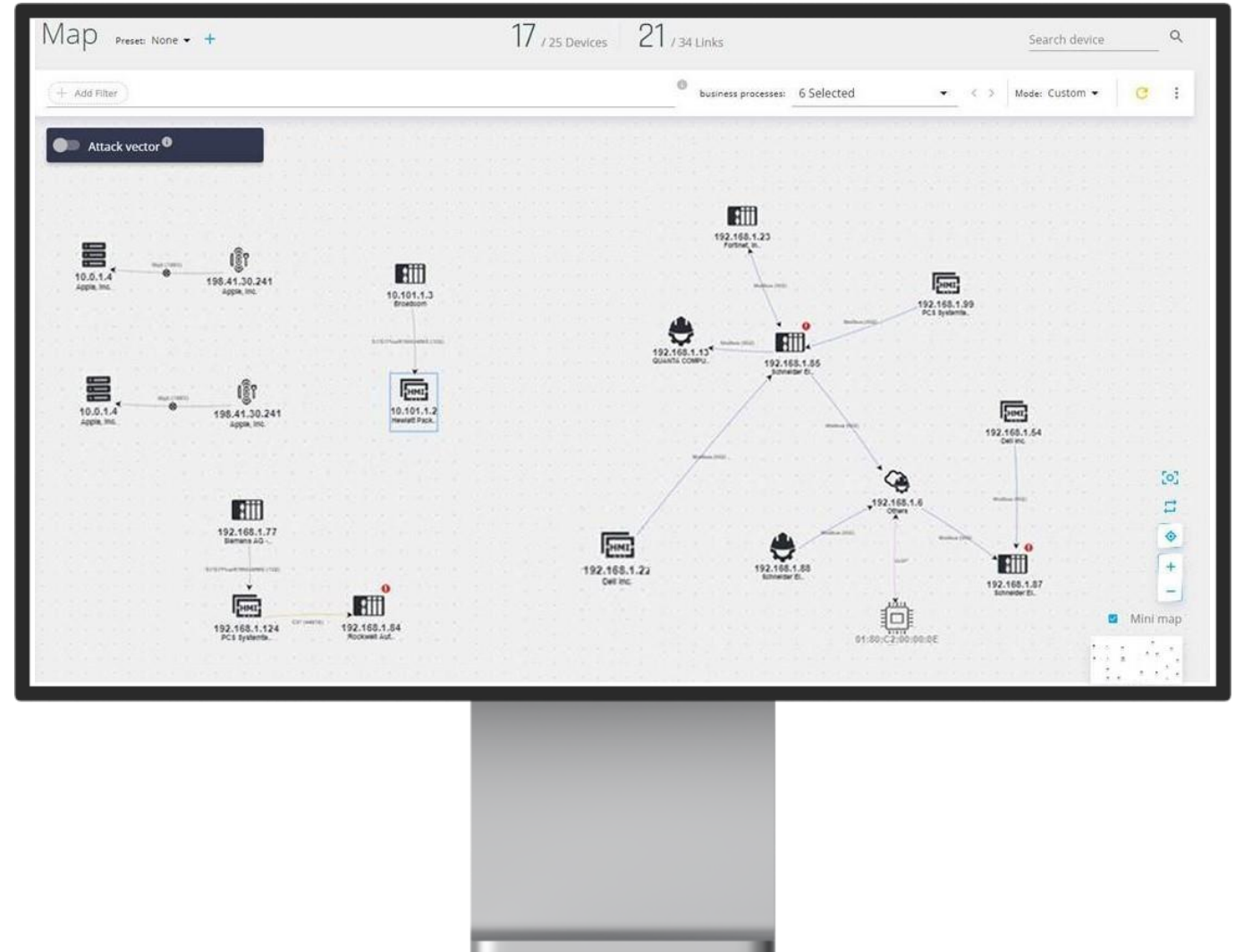
iSEG: Secure Gateway

Product Details



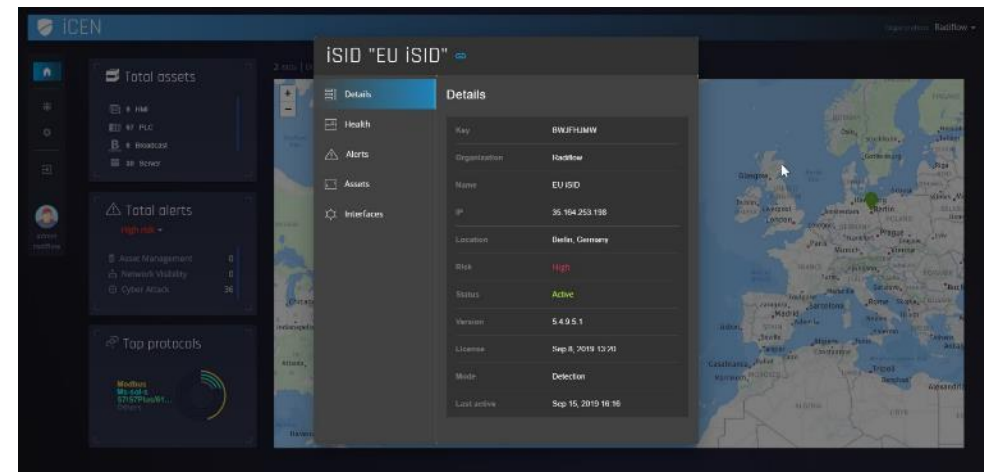
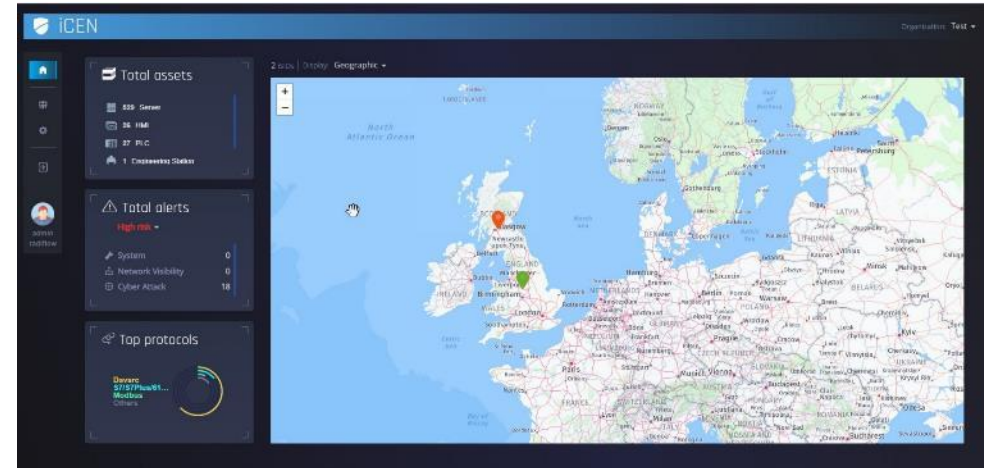
ISID Industrial Threat Detection

- Passive monitoring using OT DPI analysis
- Patented smart-collectors for distributed sub-networks
- Central monitoring system for enterprise-wide management
- Customer benefits
 - Asset Visibility
 - Anomaly Detection
 - Change Management
 - Supply Chain Management
 - Operational Efficiency



iCEN Central Management

- Centralized platform for management of all facilities with iSID
 - Aggregates information from multiple iSID systems
 - Map and table view for easy navigation
- Information consolidation
 - Total number of asset and protocols statistics
 - Alerts and assets information from every iSID
 - Health information on every iSID
- Centralized cyber capabilities
 - Total alerts per engine and risk score for each site
 - Provisioning of up-to-date cyber rules to multiple iSIDs
- User management and role-based access control
- Secure connection to iSID



CIARA – OT/ICS Risk Assessment and Mitigation Planning

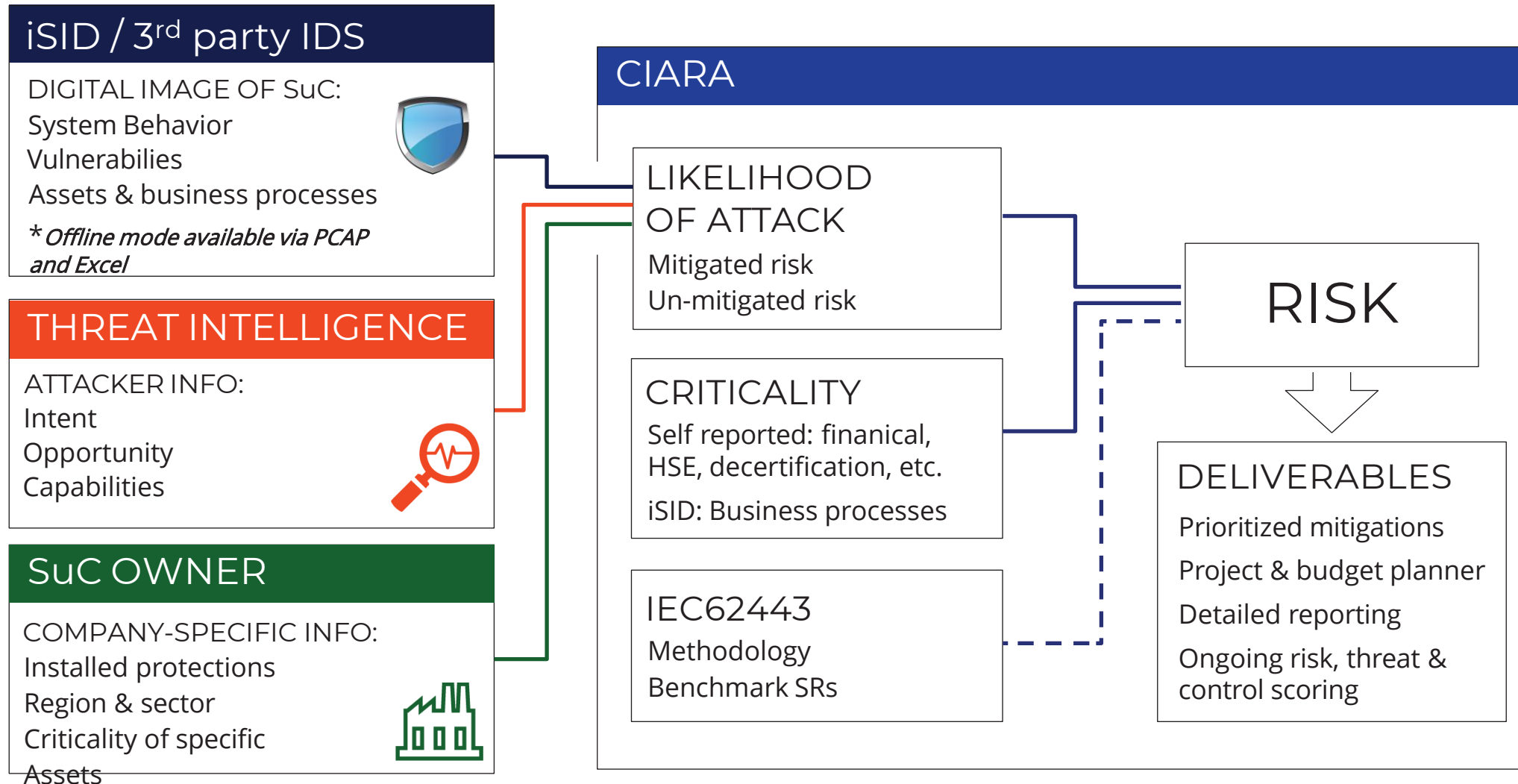
- OT Cyber Risk Posture
 - Network digital image with zones and business processes
 - Breach attack simulation
 - Relevant Adversaries
 - Mitigations
- Risk Reduction Planning
 - Security controls roadmap planning
 - Optional user tuning of weights
- Compliance
 - 62443 Methodology & Workflow
 - Recommendations & Reports



CIARA Goals

- Employ a fully-automated, data-driven risk assessment algorithm
 - Inside intel
 - Threat landscape
- Provide a comprehensive mitigation roadmap
- Increase Cyber security ROI
- IEC 62443 compliance reports

CIARA Workflow



ISAP Smart Collector RF 2180

Radiflow

PRODUCT DATASHEET

iSAP RF-2180 Smart Collector

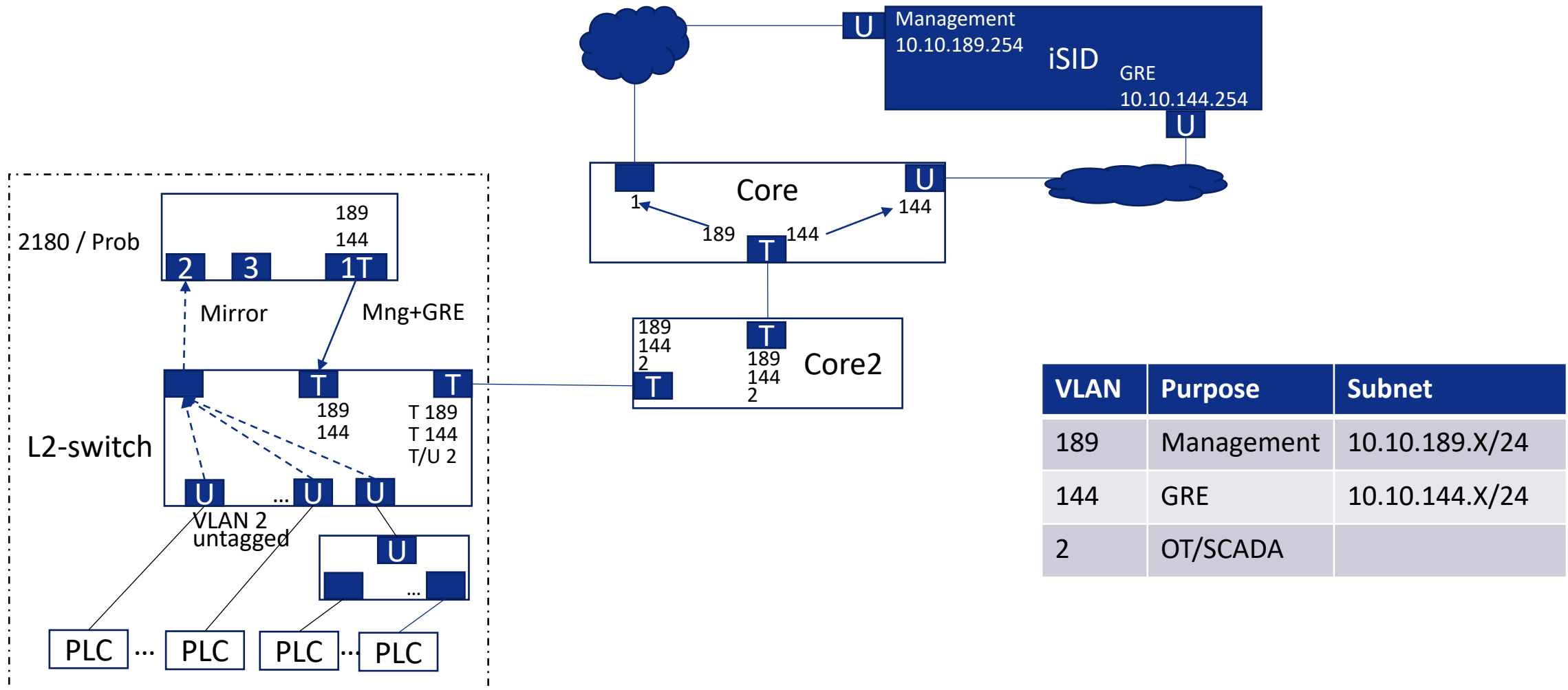


HIGHLIGHTS

- Aggregation and tunneling of monitored network traffic to the iSID Threat Detection System for analysis
- Three 1Gbit secure, passive and non-interfering Ethernet ports for incoming traffic
- Unidirectional transmission of mirrored network traffic through one-way link
- Compression of industrial protocols at 1:10 ratio
- Encrypted tunnel over the transport network
- Fit for harsh industrial environments

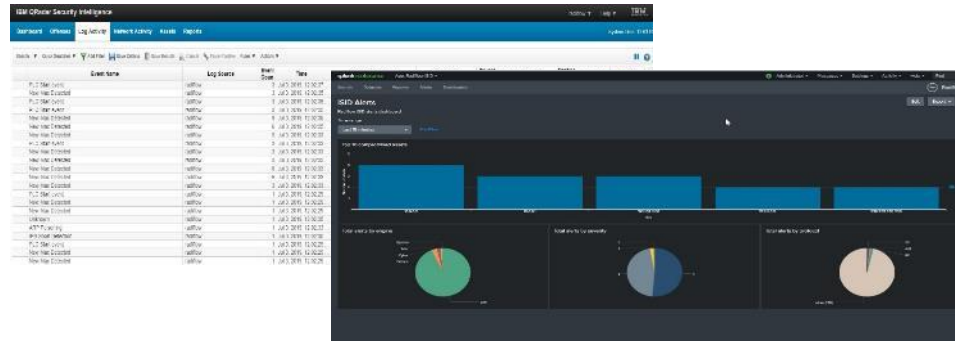
**SEND ALL DATA TRAFFIC FROM REMOTE SITES TO A CENTRAL ISID
THREAT DETECTION SYSTEM WITHOUT TAXING YOUR NETWORK**

Smart Probe



iSID 3rd Party Integrations

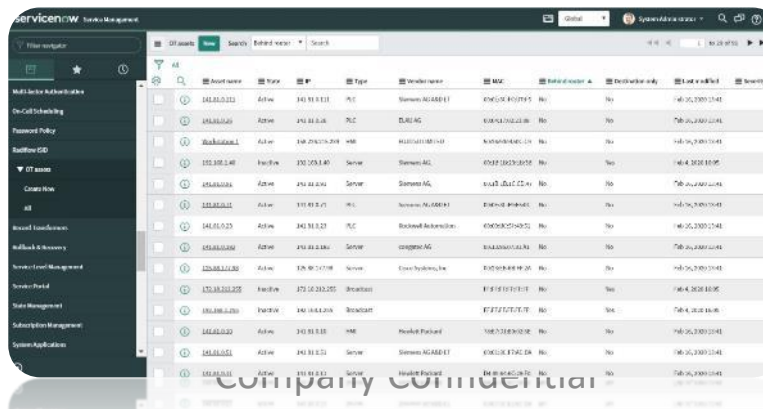
- Leading SIEM products



- Leading FW vendors



- Asset management solutions

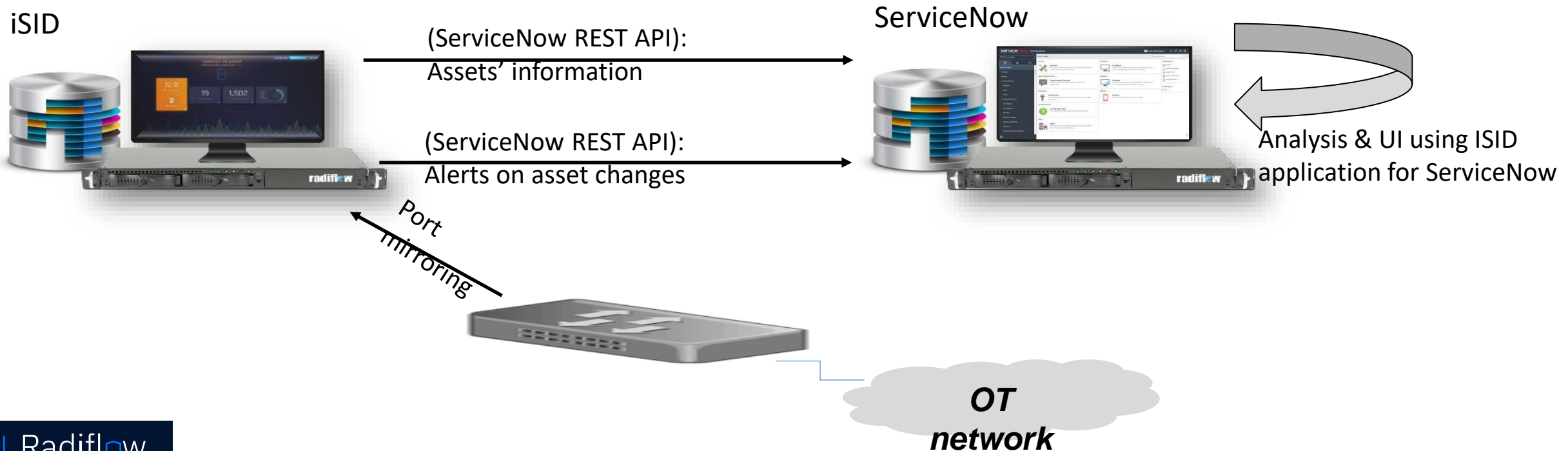


Applications

Palo Alto Networks Firewall
Fortinet Firewall
ServiceNow OT Center
ServiceNow
CylusOne syslog listener
Palo Alto syslog listener
Cervello
Siga
Cisco ISE

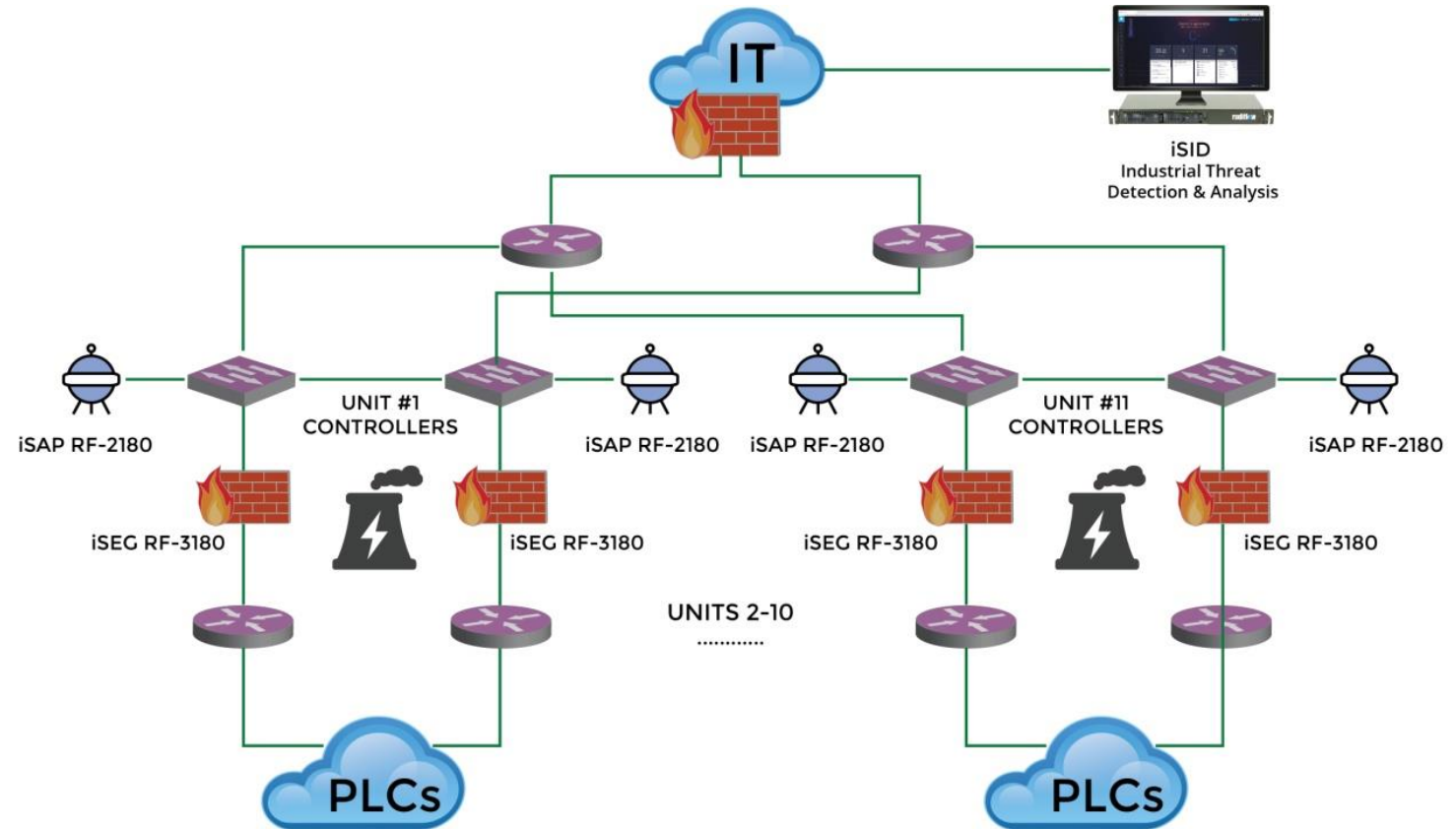
Case study - OT asset discovery for leading manufacturer

- Asset management synchronization – OT assets discovered by iSID are automatically created in ServiceNow CMDB
- Alerts synchronization – alerts detected by iSID are automatically created in ServiceNow as incidents

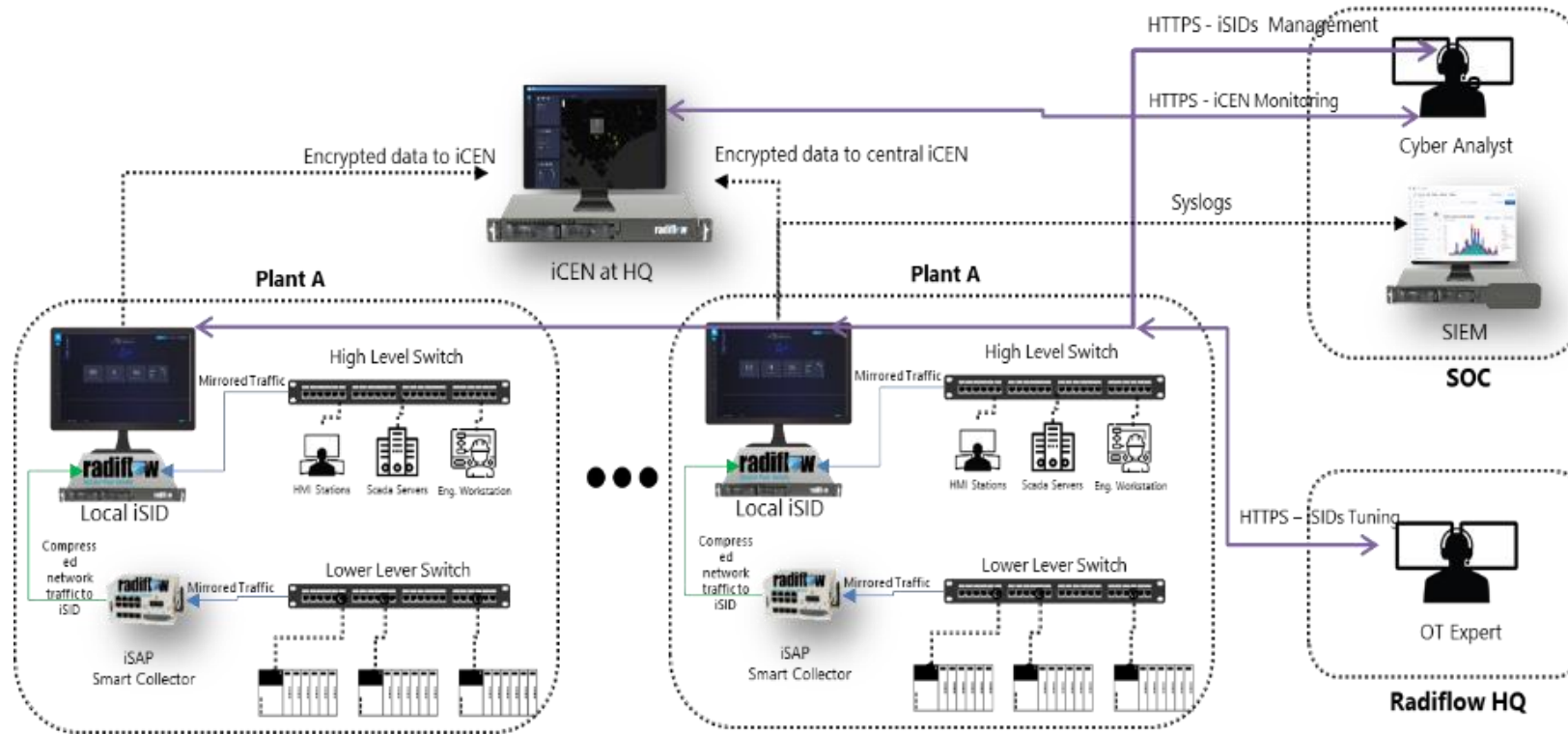


Large Scale – Power Plant

- Central iSID, monitoring 11 turbines, using 2 probes at every sub-network
- RF-3180 used for DPI firewalling of commands to each unit PLCs
- DPI for ICCP, S7, Modbus TCP and RTU



Global Chemical Manufacturer



- Local iSID installed at each plant
- iSAP collectors at each assembly line
- HQ supervision of multiple iSIDs
- Integration to external SOC with OT playbook

Sabancı investment in Radiflow



- \$10Bn revenues & \$1Bn Net income in 2021
- Sabancı acquired 51% of Radiflow shares

Radiflow unique insights based on Sabanci collaboration



Sabanci subsidiaries as Radiflow design-partners

- Exposure to sites from a multitude of verticals, geographies and vendors
- Open access to various stakeholders

Unique value-add to customers

- Optimized event filtering
- Benchmarking for risk scoring
- Up-to-date industry trends